

EQUIP. TYPE *R390A/URR* EXP. NO.

*COL 548 7495 002*

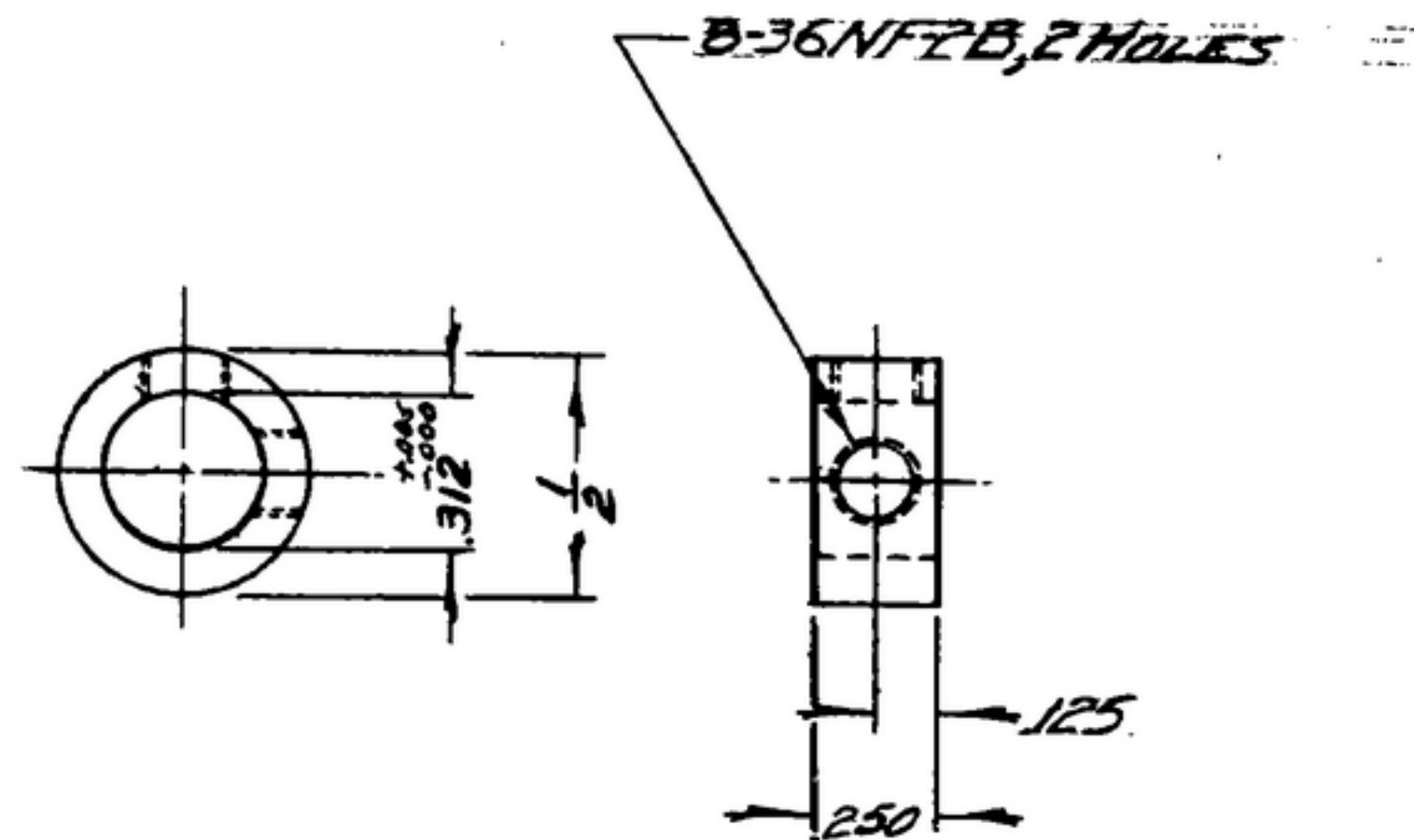
NOTICE: WHEN GOVERNMENT DRAWINGS, SPECIFICATIONS, OR OTHER DATA ARE USED FOR ANY PURPOSE OTHER THAN TO CONSTITUTE DATA A SEPARATELY RELATED GOVERNMENT PURCHASED OPERATION, THE UNITED STATES GOVERNMENT THEREBY INCURS NO RESPONSIBILITY FOR ANY OMISSION, ERROR, OR IN ANY WAY SUPPLYING THE GOVERNMENT MAY HAVE FACILITATED, PROVIDED, OR IN ANY WAY SUPPLYING THE DATA DRAWINGS, SPECIFICATIONS, OR OTHER DATA IS NOT TO BE REGARDED BY IMPLICATION OR OTHERWISE AS IN ANY MANNER ENDORSING THE HOLDING OR ANY OTHER FORM OF CONSTRUCTION, OR CONFIRMING ANY RIGHTS OR PRIVILEGES TO INVENTION, USE, OR SELL ANY PATENTED INVENTION THAT MAY BE ANY USE OR RELATED THEREBY.

THIS DOCUMENT HAS BEEN FURNISHED BY THE GOVERNMENT AND MAY BE REPRODUCED AND USED IN CONNECTION WITH ANY GOVERNMENT PURCHASED OR CONTRACTED OPERATION.

\* FOR INFORMATION ONLY. CONTRACTOR MAY AT HIS OPTION DEVIATE FROM THESE PROCESS DETAILS.

REVISIONS

SYM	DESCRIPTION	DATE	APPROVAL
-----	-------------	------	----------



NOTES:  
1: ALL SCREW THREADS PER BUREAU OF STANDARDS HANDBOOK H-28.

GRES, COMP. 3035, COND. B, SURFACE COND d, PER SPEC MIL-S-7720  
FINISH: E 300 PER SPEC. MIL-F-14072.  
~~\* COLLINS 588 0025 00.~~

COLLINS PART NO.	ITEM	QTY	PART NO.	DESCRIPTION	DATE	DATE SPEC
------------------	------	-----	----------	-------------	------	-----------

LIST OF MATERIAL ~~COLLINS PART NO. 558 0283 002~~

DRAWN <i>ECS</i>		CHECKED <i>Alm</i>		APPROVED		COLLINS RADIO CO. CEDAR RAPIDS, IOWA <i>14214-PH-51-93</i>		DEPARTMENT OF THE ARMY SIGNAL CORPS ENGINEERING LABORATORIES FORT MONMOUTH NEW JERSEY	
UNLESS OTHERWISE SPECIFIED: DECIMAL DIMENSIONS INCLUDING HOLE SIZES MAY VARY ±.008 FRACTIONAL DIMENSIONS INCLUDING HOLE SIZES MAY VARY ±1/64 MACHINED ANGLES MAY VARY ±.1° SHEARED ANGLES MAY VARY ±.25° BROKEN ANGLES MAY VARY ±.1° ECCENTRICITY BETWEEN ANY DIAMETERS ON THE SAME CENTERLINE SHALL NOT EXCEED .010 TOTAL INDICATOR READING. ALL DIMENSIONS ARE FINISH DIMENSIONS INCLUDING APPLIED FINISH AND ARE GIVEN IN INCHES.						SIGNAL CORPS			
558-0324-004		SM-D-343600		SM-D-248975		REVIEWED <i>PME</i>			
-COLLINS NO.		NEXT ASSY		USED ON		APPROVED <i>HLV</i> <i>PME</i>		SM-B-248934	
APPLICATION				DATE <i>26 JAN 56</i>		SCALE <i>2/1</i>			